

**AGENDA**

**UNIVERSITY OF SOUTHERN INDIANA  
BOARD OF TRUSTEES**

**September 4, 1997**

**SECTION 1 - GENERAL AND ACADEMIC MATTERS**

- A. Approval of Minutes of July 11, 1997, Meeting
- C. Establishment of Next Meeting Date, Time, Location
- D. President's Report

**SECTION II - FINANCIAL MATTERS**

- A. Report of the Construction Committee
- B. Report on Current Construction Projects
- C. Approval of Authorizing Resolution for Student Housing Financing
- D. Approval of Budget Appropriations, Adjustments, and Transfers
- E. Approval of Budget Adjustments for Fiscal Year 1996-97

**SUPPLEMENTAL INFORMATION**  
**UNIVERSITY OF SOUTHERN INDIANA**  
**BOARD OF TRUSTEES**

**September 4, 1997**

**SECTION I - GENERAL AND ACADEMIC MATTERS**

- A. APPROVAL OF MINUTES OF JULY 11, 1997, MEETING**
- B. ESTABLISHMENT OF NEXT MEETING DATE, TIME, LOCATION**
- C. PRESIDENT'S REPORT**

**SECTION II - FINANCIAL MATTERS**

**A. REPORT OF THE CONSTRUCTION COMMITTEE**

A report will be presented on the bids for construction of the Liberal Arts Center.

**B. REPORT ON CURRENT CONSTRUCTION PROJECTS**

A report will be presented on the status of current construction projects.

**C. APPROVAL OF AUTHORIZING RESOLUTION FOR STUDENT HOUSING FINANCING**

Approval of the following resolution is recommended.

WHEREAS, the Board of Trustees has approved the construction of three additional housing units of the existing style in the present housing complex; and

WHEREAS, the Board of Trustees wishes to proceed with the construction in a timely manner; and

WHEREAS, the financing plan for the construction may require final approval and closure before the next scheduled meeting of the Board of Trustees in November, 1997;

NOW, THEREFORE, BE IT RESOLVED that the Finance Committee is authorized to review and approve a financing plan and report to the Board on any action taken.

**D. APPROVAL OF BUDGET APPROPRIATIONS, ADJUSTMENTS, AND TRANSFERS**

Approval of the following budget appropriations, adjustments, and transfers is recommended.

**1. Additional Appropriations**

From:	Unappropriated Current Operating Funds		
To:	1-10170	USI Theatre Supplies & Expense	13
To:	1-10170	USI Theatre Supplies & Expense	58
To:	1-10200	School of Liberal Arts Supplies & Expense	122
To:	1-10210	Art & Music Supplies & Expense	628
To:	1-10340	Chemistry Supplies & Expense	16
To:	1-10340	Chemistry Supplies & Expense	950
To:	1-10350	Geology & Physics Supplies & Expense	129

**2. Appropriation Transfers**

From:	1-10200	School of Liberal Arts Supplies & Expense	
To:	1-10400	School of Nursing & Health Professions Capital Outlay	1,400
From:	1-16500	Computer Center Supplies & Expense	
To:	1-16500	Computer Center Capital Outlay	35,921

**E. APPROVAL OF BUDGET ADJUSTMENTS FOR FISCAL YEAR 1996-97**

The annual closing of the financial records requires adjustments, transfers between funds, and additional appropriations.

Approval of these closing transactions as presented in Exhibit II-A is recommended.

**BUDGET ADJUSTMENTS FOR FISCAL YEAR 1996-97**

1. Additional Appropriations

From:	Unappropriated Current Operating Funds		
To:	1-10160	Mid America Singers Supplies & Expense	9,577
To:	1-10170	USI Theatre Supplies & Expense	8
To:	1-10195	Southern Indiana Review Supplies & Expense	500
To:	1-10200	School of Liberal Arts Supplies & Expense	350
To:	1-10210	Art & Music Supplies & Expense	345
To:	1-10260	Political Science & Philosophy Supplies & Expense	7
To:	1-10300	School of Science & Engineering Technology Personal Services Capital Outlay	1,000 2,861
To:	1-10310	Biology Supplies & Expense	252
To:	1-10320	Engineering Technology Supplies & Expense	797
To:	1-10330	Mathematics Personal Services	500
To:	1-10340	Chemistry Supplies & Expense	745
To:	1-10470	Radiologic Technology Supplies & Expense	707
To:	1-10700	School of Business Supplies & Expense	1,996
To:	1-13200	Library Capital Outlay	210
To:	1-14101	Intramurals	

		Supplies & Expense	3,082
To:	1-14200	Athletic Administration Personal Services	250
To:	1-16200	President's Office Personal Services	30
To:	1-16220	Advancement Personal Services Supplies & Expense	22,240 457
To:	1-16240	Special Events Personal Services	135
To:	1-16400	Development Supplies & Expense	2,275
To:	1-10200	School of Liberal Arts Personal Services Supplies & Expense	70,400 10,617
To:	1-10300	School of Science & Engineering Technology Personal Services Supplies & Expense	10,800 1,428
To:	1-10520	Institutional Research Supplies & Expense	4,500
To:	1-10921	Academic Skills Personal Services Supplies & Expense	6,000 978
To:	1-10230	English Personal Services	125
To:	1-14100	Recreation & Building Supplies & Expense Capital Outlay	6,981 784
To:	1-15600	Distribution Services Personal Services	22,093
To:	1-15700	Security Personal Services Supplies & Expense Capital Outlay	192 133,890 19,812
To:	1-16000	General Administrative Services Supplies & Expense	48,436
To:	1-16010	Scholastic Excellence Remitted Fees Supplies & Expense	213,224

To:	1-16120	Business Office Supplies & Expense	41,229
To:	1-16500	Computer Center Repairs & Maintenance	67,603
To:	1-10170	USI Theatre Supplies & Expense	5,867
To:	1-10340	Chemistry Supplies & Expense Repairs & Maintenance	1,207 31
To:	1-10700	School of Business Supplies & Expense	241
To:	1-10700	School of Business Supplies & Expense	8,745
To:	1-10740	Information Systems & Business Education Supplies & Expense	1,375
To:	1-10840	Teacher Education Personal Services	4,830
To:	1-10900	Extended Services Supplies & Expense	34,526
To:	1-10920	University Division Supplies & Expense	50
To:	1-10940	Distance Education Capital Outlay	7,703
To:	1-13100	Media Services Personal Services Supplies & Expense Repairs & Maintenance	4,487 5,390 1,142
To:	1-14000	Student Administrative Services Personal Services	292
To:	1-15000	Physical Plant Repairs & Maintenance Capital Outlay	157,679 86,840
To:	1-15700	Security Repairs & Maintenance	1,230
To:	1-16110	Human Resources Capital Outlay	26,000
To:	1-16230	News & Information Services Supplies & Expense	5,558

To:	1-16300	Publications Supplies & Expense	297,163
To:	1-16301	Duplicating Services Supplies & Expense	173,443
To:	1-16302	Copy Center Services Supplies & Expense Repairs & Maintenance	26,762 44,883
To:	1-16303	Graphic Design Capital Outlay	21,222
To:	1-16500	Computer Center Capital Outlay	17,704
From:	Unappropriated Designated Funds		
To:	2-20000	Student Services Fee Supplies and Expense	41,361
To:	2-20003	Student Activities Fee General Remissions. Supplies and Expense	662
To:	2-20004	Student Activities Fee Revolving Fund-Employee/Spouse Fee Waiver Supplies and Expense	229
To:	2-20008	Student Activities Fee Revolving Fund-Child of Employee Fee Waiver Supplies and Expense	1,469
To:	2-20100	Student Programs Supplies and Expense	1,942
To:	2-20120	Multicultural Center Supplies and Expense	257
To:	2-20140	Student Leadership Academy Supplies and Expense	10,018
To:	2-20300	Student Government Association Repairs and Maintenance Capital Outlay	127 337
To:	2-20650	Admissions Special Recruiting Supplies and Expense	1,110
To:	2-20900	Bodmer Exhibit Restoration Supplies and Expense	14,670
To:	2-21000	Instructional Facilities Fees Supplies and Expense	183,397



To:	2-21100	Campus Services Fee Personal Services Supplies and Expense Repairs and Maintenance	160 13,574 83
To:	2-22000	Extended Services Revolving Fund Supplies and Expense	40,947
To:	2-22001	Extended Services Educational Trips Supplies and Expense	12,127
To:	2-22100	Historic Southern Indiana Revolving Fund Supplies and Expense	12,698
To:	2-22200	Extended Services Case Management Supplies and Expense	19,889
To:	2-22250	Japanese Saturday School Personal Services Supplies and Expense	33,714 812
To:	2-22800	Ropewalk Writer's Retreat Supplies and Expense	12,259
To:	2-23100	Faculty Development Travel Supplies & Expense	9,452
To:	2-23200	Occupational Therapy Professional Practice Supplies and Expense	4,008
To:	2-23210	Nursing & Health Professions Professional Practice Personal Services Supplies and Expense Capital Outlay	1,615 3,050 6,414
To:	2-23300	School of Business Revolving Account Supplies and Expense	6,957
To:	2-24200	Computer Maintenance Fund Supplies and Expense	19,985
To:	2-24400	Telecom Revolving Fund Supplies and Expense	77,616
To:	2-24600	Employee Benefit Revolving Fund Personal Services Supplies and Expense	420 15,693
To:	2-25000	Faculty Research Fund Supplies and Expense	3,083
To:	2-25111	Faculty Research-Professor Aakhus Supplies and Expense	417

From:	Unappropriated Auxiliary Funds		
To:	3-30100	Rental Property Supplies and Expense Repairs and Maintenance	108 10,244
To:	3-30200	University Center Supplies and Expense Repairs and Maintenance	78 13,843
To:	3-30300	University Licensing Supplies and Expense	4,085
To:	3-30510	Bookstore New Books Supplies and Expense	172,729
To:	3-30520	Bookstore Used Books Supplies and Expense	12,344
To:	3-30530	Bookstore Supplies Supplies and Expense	11,073
To:	3-30540	Bookstore Wholesale Books Supplies and Expense	26,037
To:	3-30550	Bookstore Sundries Supplies and Expense	7,720
To:	3-30560	Bookstore Trade Books Supplies and Expense	1,899
To:	3-30600	Athletics Operations Personal Services Supplies and Expense	572 4,557
To:	3-30601	Athletic Revenue Supplies and Expense	673
To:	3-30602	Baseball Personal Services Supplies and Expense Repairs and Maintenance	64 18,136 47
To:	3-30603	Tennis-Men Supplies and Expense	1,682
To:	3-30604	Tennis-Women Supplies and Expense	665
To:	3-30605	Basketball-Women Supplies and Expense Repairs and Maintenance Capital Outlay	3,868 31 340

To:	3-30606	Basketball-Men Personal Services Supplies and Expense	200 24,207
To:	3-30607	Softball-Women Personal Services Supplies and Expense	54 5,676
To:	3-30608	Golf-Men Supplies and Expense Capital Outlay	1,503 46
To:	3-30609	Cross Country-Men Personal Services Supplies and Expense	460 6,233
To:	3-30610	Soccer-Men Supplies and Expense Repairs and Maintenance	1,378 119
To:	3-30611	Volleyball-Women Personal Services Supplies and Expense	363 2,455
To:	3-30612	Athletic Tourney Supplies and Expense	11,156
To:	3-30615	Cross Country-Women Supplies and Expense Repairs and Maintenance	888 135
To:	3-30616	Athletics Concessions Personal Services Supplies and Expense	306 8,317
To:	3-30617	Golf-Women Supplies and Expense Capital Outlay	203 46
To:	3-30620	Soccer-Women Supplies and Expense Repairs and Maintenance	1,471 25
To:	3-30698	Athletic Reserve Supplies and Expense	14,704
To:	3-30699	Athletic NCAA Travel Supplies and Expense	20,389
To:	3-30700	Athletic Grant-In-Aid Supplies and Expense	2,381
To:	3-30707	Softball-Women Grant-In-Aid Supplies and Expense	73

To:	3-30709	Cross Country-Men Grant-In-Aid Supplies and Expense	3,336
To:	3-30800	Children's Center Personal Services Supplies and Expense Repairs and Maintenance	5,167 345 169
To:	3-30850	School Age Program-1996 Personal Services Supplies and Expense	2,090 3,043
To:	3-30900	New Harmony Operations Supplies and Expense Capital Outlay	1,869 500
To:	3-30920	New Harmony Tours Personal Services Supplies and Expense	304 9,454
To:	3-30930	New Harmony State Sites Supplies and Expense Repairs and Maintenance	71,937 2,263
To:	3-30940	New Harmony Guest House Supplies and Expense Repairs and Maintenance	2,067 3,345
To:	3-31030	Summer Refurbishing 1996 Personal Services Supplies and Expense Repairs and Maintenance Capital Outlay	76,953 11,685 38,316 5,230
To:	3-31040	Housing Capital Renovation Repairs and Maintenance	17,103
To:	3-32006	Young Abe Lincoln-1996 Personal Services Supplies and Expense Repairs and Maintenance	756 18,789 505
To:	3-33000	Housing Services Supplies and Expense Supplies and Expense	395,793 15,039
To:	3-33100	McDonald Apartments Personal Services Supplies and Expense Repairs and Maintenance Capital Outlay	29,761 293,062 4,100 6,348
To:	3-33200	McDonald Apartments Damages Supplies and Expense	79,310

		Repairs and Maintenance	5,641
To:	3-33400	McDonald Apartments Activity Fee Supplies and Expense	3,130
To:	3-33500	O'Daniel Apartments Personal Services	21,568
		Supplies and Expense	599,562
		Repairs and Maintenance	9,871
		Capital Outlay	5,057
To:	3-33650	O'Daniel Apartments Rental Supplies and Expense	48
To:	3-33850	O'Daniel Apartments Activity Fee Supplies and Expense	2,509
To:	3-33950	Golden Towers Apartments Personal Services	60,156
		Capital Outlay	217
To:	3-35006	New Harmony Theatre 1996 Personal Services	1,712
		Supplies and Expense	4,896
To:	3-36000	University Fitness Center Capital Outlay	106,298
From:	Unappropriated Restricted Funds		
To:	4-45087	1996-97 Economic Education Personal Services	457
		Supplies and Expense	2,593
To:	4-45090	Medical Education Repairs and Maintenance	27,819
To:	4-45099	Malatynska Research Account Personal Services	14,000
		Supplies and Expense	11,000
To:	4-46333	Student/Faculty Research-Professor Shaw Personal Services	76
To:	4-46336	Science Center Renovation-National Science Foundation Capital Outlay	1,193,947
To:	4-46550	Malcolm Koch Fellowship Personal Services	6,728
To:	4-46812	Economic Geology of New Harmony Supplies and Expense	1,370
To:	4-46814	ACSI Heritage Week	

		Supplies and Expense	100
To:	4-46902	Southern Indiana Rural Development Project Supplies and Expense	48,997
From:	Unappropriated Plant Funds		
To:	6-60020	Interest on Plant Funds Supplies and Expense	1,229
To:	6-60146	General Energy Performance Contract Supplies and Expense	39
To:	6-61300	General Purpose Classroom Supplies and Expense	170
To:	6-62160	West Science Center Entrance Supplies and Expense	618

**2. Transfer of Funds**

From:	1-10900	Extended Services	
To:	2-22400	Total Quality Management	20,000
From:	1-10900	Current Operating-Extended Services	
To:	2-22250	Japanese Saturday School	34,526
From:	1-15700	Current Operating-Security	
To:	6-60140	Security Renovation	133,890
From:	1-16000	Current Operating-General Administration	
To:	6-61060	Master Plan	98,450
To:	3-36000	Fitness Center	40,947
From:	2-20000	Student Service Fees	
To:	3-30200	University Center	18,194
From:	2-20100	Student Programs	
To:	2-20120	Multicultural Center	398
From:	2-20500	Shield	
To:	2-20400	Student Publications	3,579
From:	2-20600	Transitions	
To:	2-20400	Student Publications	260
From:	2-21000	Instructional Facilities Fees	
To:	1-09000	Current Operating	77,132
From:	2-21100	Campus Services Fees	
To:	6-60200	Parking Facilities	11,978
From:	2-22000	Extended Services Revolving Fund	
To:	1-09100	Transfers In	5,450

From:	2-22000	Extended Services Revolving Fund	
To:	2-22400	Total Quality Management	35,000
From:	2-22350	Extended Services Training Partnerships	
To:	2-22000	Extended Services Revolving Fund	1,250
From:	3-30500	Bookstore	
To:	6-60015	Reserve for Auxilliary Facilities	226,351
To:	6-60035	Bookstore Reserve	300,000
From:	3-30698	Athletic Reserve	
To:	3-30601	Athletic Revenue	9,292
To:	3-30612	Athletic Tourney	266
To:	3-30699	Athletic NCAA Travel	1,928
To:	6-60125	PAC Seating	3,218
From:	3-33000	Student Housing	
To:	3-36000	Fitness Center	20,443
From:	3-33100	McDonald Apartments	
To:	3-33005	Housing Equipment Inventory	4,093
From:	3-33500	O'Daniel Apartments	
To:	3-33005	Housing Equipment Inventory	10,043
From:	6-60015	Reserve For Auxilliary Facilities	
To:	6-61100	University Center Construction	27,180
To:	6-61150	University Center Equipment	186,059
From:	6-60103	Copy Center Equipment	
To:	6-60175	Administrative Service Center	230,000
From:	6-64100	Academic Building Facilities	
To:	6-61405	Physical Plant Renovation	64,115
From:	6-64150	Academic Building Fee Interest	
To:	6-60130	Technology Center Renovation	2,689
To:	6-60135	Technology Art Studio	2,597

### **3. Transfer and Appropriation of Funds**

From:	1-10100	General Instruction	
To:	2-23300	General Instruction Revolving Fund Supplies and Expense	1,560
From:	1-14000	General Student Adminstrative Services	
To:	3-33100	McDonald Apartments Capital Outlay	1,230
From:	1-15000	Current Operating-Physical Plant	
To:	6-60320	Project Kaleidoscope Supplies and Expenses	15,000

From:	1-16000	General Administration	
To:	3-36000	University Fitness Center	
		Personal Services	25,791
		Supplies and Expense	15,156
From:	2-20000	Student Services Fees	
To:	1-14000	Student Administrative Services	
		Personal Services	420
		Supplies & Expense	891
		Capital Outlay	1,541
To:	1-14001	Admissions	
		Supplies & Expense	7,610
To:	1-14101	Intramurals	
		Personal Services	3,000
		Supplies & Expense	428
From:	2-20140	Student Leadership Academy	
To:	2-20100	Student Programs	
		Supplies and Expense	335
From:	3-30600	Athletics Operations	
To:	2-20100	Student Programs	
		Supplies and Expense	2,871
From:	3-33000	Housing Services	
To:	3-36000	University Fitness Center	
		Supplies and Expense	15,484
		Repairs and Maintenance	4,528
		Capital Outlay	431
From:	3-33100	McDonald Apartments	
To:	3-33005	Housing Equipment Inventory	
		Supplies and Expense	3
		Repairs and Maintenance	4,299
		Capital Outlay	6,670
From:	3-33850	O'Daniel Apartments Activity Fee	
To:	3-33400	McDonald Apartments Activity Fee	
		Supplies and Expense	1,540
From:	6-60005	McDonald Apartments Reserve Fund	
To:	3-33100	McDonald Apartments	
		Supplies and Expense	243,164
From:	6-60010	Interest Earned Auxilliary Funds	
To:	3-30940	New Harmony Guest House	
		Repairs and Maintenance	1,264
From:	6-60010	Interest Earned From Auxilliary Funds	
To:	3-30940	New Harmony Guest House	
		Supplies & Expenses	1,264
To:	6-60110	Property Purchase	
		Capital	97,816



To:	6-60126	PAC Bleacher Capital	10,415
To:	6-60142	New Harmony Park Project Capital	21,442
To:	6-61083	School House Repairs And Maintenance	4,958
From:	6-60701	Administrative Computing Fund	
To:	6-60705	Communications Infrastructure Capital	25,725

**4. Appropriation Transfers**

From:	1-10100	General Instruction Personal Services	
To:	1-10101	NCA Self Study Supplies & Expense	16,732
To:	1-10105	Academic Computer Labs Supplies & Expense	7,918
To:	1-10120	Historic Southern Indiana Supplies & Expense	804
To:	1-10160	Mid America Singers Supplies & Expense	2,015
To:	1-10185	Videotaping Services Supplies & Expense	43
To:	1-10190	WSWI Supplies & Expense	2,995
To:	1-10195	Southern Indiana Review Supplies & Expense	1,169
To:	1-10196	Nahuatl Book Project Supplies & Expense	7,969
To:	1-10200	School of Liberal Arts Capital Outlay	28,836
To:	1-10210	Art & Music Supplies & Expense	693
To:	1-10212	Music Instruction Supplies & Expense	594
To:	1-10220	Communications Supplies & Expense Capital Outlay	4,775 295
To:	1-10230	English Supplies & Expense Capital Outlay	4,191 21
To:	1-10241	Japanese Exchange Program Supplies & Expense	8
To:	1-10250	History Supplies & Expense	979
To:	1-10270	Psychology Supplies & Expense	1,817
To:	1-10280	Sociology Supplies & Expense	945
To:	1-10300	School of Science & Engineering Technology Capital Outlay	90,396
To:	1-10320	Engineering Technology	

		Capital Outlay	15,256
To:	1-10350	Geology & Physics Capital Outlay	7,067
To:	1-10400	School of Nursing & Health Professions Capital Outlay	53,496
From:	1-10100	General Instruction Supplies & Expense	
To:	1-10230	English Personal Services	4,399
To:	1-10740	Info Systems & Business Education Personal Services	4,368
To:	1-13100	Media Services Supplies & Expense	125
To:	1-13200	Library Supplies & Expense	2,305
From:	1-10100	General Instruction Repairs & Maintenance	
To:	1-10400	School of Nursing & Health Professions Capital Outlay	8,707
To:	1-10410	Nursing Capital Outlay	344
From:	1-10100	General Instruction Capital Outlay	
To:	1-13100	Media Services Capital Outlay	10,995
From:	1-10102	College Achievement Program Supplies & Expense	
To:	1-10102	CAP Personal Services	910
From:	1-10104	Campus Ministry Personal Services	
To:	1-10410	Nursing Capital Outlay	672
To:	1-10420	Health Professions Capital Outlay	475
To:	1-10450	Dental Clinic Capital Outlay	1,053
From:	1-10104	Campus Ministries Repairs & Maintenance	
To:	1-10450	Dental Clinic Capital Outlay	259
From:	1-10120	Historic Southern Indiana Personal Services	
To:	1-10430	Occupational Therapy Capital Outlay	3,182
To:	1-10450	Dental Clinic Capital Outlay	38

To:	1-10520	Institutional Research Capital Outlay	3,083
To:	1-10820	Social Work Capital Outlay	1,256
To:	1-10830	Physical Education Capital Outlay	1,261
To:	1-10840	Teacher Education Capital Outlay	533
To:	1-10910	Continuing Education Capital Outlay	688
To:	1-10920	University Division Supplies & Expense	2,100
From:	1-10120	Historic Southern Indiana Repairs & Maintenance	
To:	1-10910	Continuing Education Capital Outlay	328
From:	1-10150	Arts Commission-General Supplies & Expense	
To:	1-10900	Extended Services Capital Outlay	2,529
From:	1-10160	Arts Commission-Music Supplies & Expense	
To:	1-10160	Arts Commission-Music Repairs & Maintenance	13
From:	1-10170	USI Theatre Supplies & Expense	
To:	1-10170	USI Theatre Personal Services	342
From:	1-10170	USI Theatre Repairs & Maintenance	
To:	1-10170	USI Theatre Supplies & Expense	546
From:	1-10180	Aerie Personal Services	
To:	1-10900	Extended Services Capital Outlay	318
From:	1-10190	WSWI Supplies & Expense	
To:	1-15700	Security Personal Services	208
From:	1-10190	WSWI Repairs & Maintenance	
To:	1-10900	Extended Services Capital Outlay	2,797
From:	1-10200	School of Liberal Arts	

To:	1-10200	Supplies & Expense School of Liberal Arts Capital Outlay	890
From:	1-10200	School of Liberal Arts Repairs & Maintenance	
To:	1-10900	Extended Services Capital Outlay	3,169
From:	1-10251	Communal Studies Personal Services	
To:	1-10900	Extended Services Capital Outlay	392
From:	1-10300	School of Science & Engineering Technology Personal Services	
To:	1-10300	School of Science & Engineering Technology Supplies & Expense	10,800
To:	1-10700	School of Business Capital Outlay	13,701
To:	1-10900	Extended Services Capital Outlay	7,446
To:	1-10910	Continuing Education Capital Outlay	5,429
To:	1-10920	University Division Capital Outlay	255
To:	1-10921	Academic Skills Capital Outlay	4,439
To:	1-10940	Distance Education Capital Outlay	22,248
To:	1-13100	Media Services Supplies & Expense	3,558
To:	1-14006	Capital Outlay Student Life Capital Outlay	14,330 8,037
From:	1-10300	School of Science & Engineering Technology Repairs & Maintenance	
To:	1-14006	Student Life Capital Outlay	31,418
From:	1-10300	School of Science & Engineering Technology Capital Outlay	
To:	1-13100	Media Services Capital Outlay	5,498
From:	1-10310	Biology Repairs & Maintenance	
To:	1-15000	Physical Plant Capital Outlay	278
From:	1-10320	Engineering Technology Supplies & Expense	
To:	1-15000	Physical Plant	

		Capital Outlay	344
From:	1-10330	Mathematics Supplies & Expense	
To:	1-15000	Physical Plant Capital Outlay	1,490
From:	1-10350	Geology & Physics Supplies & Expense	
To:	1-10350	Geology & Physics Capital Outlay	158
To:	1-15000	Physical Plant Capital Outlay	6,249
From:	1-10400	School of Nursing & Health Professions Personal Services	
To:	1-15000	Physical Plant Capital Outlay	118,994
From:	1-10400	School of Nursing & Health Professions Capital Outlay	
To:	1-10400	School of Nursing & Health Professions Supplies & Expense	595
To:	1-13100	Media Services Capital Outlay	5,498
From:	1-10410	Nursing Personal Services	
To:	1-10410	Nursing Supplies & Expense	2,125
To:	1-15000	Physical Plant Capital Outlay	157,113
From:	1-10410	Nursing Supplies & Expense	
To:	1-15000	Physical Plant Capital Outlay	2,229
From:	1-10410	Nursing Repairs & Maintenance	
To:	1-15000	Physical Plant Capital Outlay	924
From:	1-10420	Health Professions Personal Services	
To:	1-15000	Physical Plant Capital Outlay	1,098
From:	1-10430	Occupational Therapy Supplies & Expense	
To:	1-15000	Physical Plant Capital Outlay	4,149
From:	1-10430	Occupational Therapy	

To:	1-15000	Repairs & Maintenance Physical Plant Capital Outlay	1,030
From:	1-10440	Dental Assisting Personal Services	
To:	1-15000	Physical Plant Capital Outlay	510
From:	1-10440	Dental Assisting Supplies & Expense	
To:	1-15000	Physical Plant Capital Outlay	198
From:	1-10450	Dental Clinic Personal Services	
To:	1-15000	Physical Plant Capital Outlay	2,274
From:	1-10450	Dental Clinic Supplies & Expense	
To:	1-15000	Physical Plant Capital Outlay	707
From:	1-10460	Dental Hygiene Personal Services	
To:	1-15000	Physical Plant Repairs & Maintenance Capital Outlay	11,671 38,732
From:	1-10460	Dental Hygiene Supplies & Expense	
To:	1-15000	Physical Plant Repairs & Maintenance	154
From:	1-10470	Radiologic Technology Personal Services	
To:	1-15000	Physical Plant Repairs & Maintenance	209
From:	1-10470	Radiologic Technology Supplies & Expense	
To:	1-15000	Physical Plant Repairs & Maintenance	205
From:	1-10470	Radiologic Technology Repairs & Maintenance	
To:	1-15000	Physical Plant Repairs & Maintenance	515
From:	1-10480	Respiratory Therapy Personal Services	
To:	1-15000	Physical Plant Repairs & Maintenance	2,317

		Repairs & Maintenance	1,385
From:	1-10700	School of Business	
		Repairs & Maintenance	
To:	1-15000	Physical Plant	
		Repairs & Maintenance	752
From:	1-10700	School of Business	
		Capital Outlay	
To:	1-13100	Media Services	
		Capital Outlay	5,498
From:	1-10730	Accounting & Business Law	
		Supplies & Expense	
To:	1-15000	Physical Plant	
		Repairs & Maintenance	146
From:	1-10740	Information Systems & Business Education	
		Supplies & Expense	
To:	1-15000	Physical Plant	
		Repairs & Maintenance	531
From:	1-10750	Economics & Finance	
		Supplies & Expense	
To:	1-15000	Physical Plant	
		Repairs & Maintenance	329
From:	1-10751	USI Impact Study	
		Supplies & Expense	
To:	1-10751	USI Impact Study	
		Personal Services	53
		Capital Outlay	275
From:	1-10760	Management & Marketing	
		Personal Services	
To:	1-10170	USI Theatre	
		Repairs & Maintenance	450
To:	1-16304	Prepress & Bindery	
		Repairs & Maintenance	323
From:	1-10800	School of Education	
		Capital Outlay	
To:	1-13100	Media Services	
		Capital Outlay	5,498
From:	1-10900	Extended Services	
		Personal Services	
To:	1-15000	Physical Plant	
		Supplies & Expense	1,011
		Repairs & Maintenance	4,485
From:	1-10900	Extended Services	
		Repairs & Maintenance	
To:	1-15000	Physical Plant	

		Repairs & Maintenance	203
From:	1-10901	Labor Management	
		Supplies & Expense	
To:	1-15000	Physical Plant	
		Supplies & Expense	116
From:	1-10910	Continuing Education	
		Personal Services	
To:	1-15000	Physical Plant	
		Supplies & Expense	4,433
From:	1-10910	Continuing Education	
		Repairs & Maintenance	
To:	1-15000	Physical Plant	
		Supplies & Expense	1,278
From:	1-10920	University Division	
		Personal Services	
To:	1-10102	College Achievement Program	
		Personal Services	518
To:	1-15000	Physical Plant	
		Supplies & Expense	11,547
From:	1-10921	Academic Skills	
		Personal Services	
To:	1-10920	University Division	
		Supplies & Expense	86
To:	1-10921	Academic Skills	
		Supplies & Expense	1,077
		Repairs & Maintenance	387
		Capital Outlay	1,355
To:	1-15000	Physical Plant	
		Supplies & Expense	4,940
From:	1-10921	Academic Skills	
		Repairs & Maintenance	
To:	1-15000	Physical Plant	
		Supplies & Expense	257
From:	1-10940	Distance Education	
		Personal Services	
To:	1-15000	Physical Plant	
		Supplies & Expense	29,756
From:	1-10940	Distance Education	
		Repairs & Maintenance	
To:	1-15000	Physical Plant	
		Supplies & Expense	1,465
From:	1-13200	Library	
		Personal Services	
To:	1-13200	Library	
		Supplies & Expense	13,608



To:	1-15000	Physical Plant Supplies & Expense	34,744
From:	1-13200	Library Supplies & Expense	
To:	1-13200	Library Capital Outlay	27,448
From:	1-13200	Library Repairs & Maintenance	
To:	1-15000	Physical Plant Supplies & Expense	4,332
From:	1-14000	Student Administrative Services Personal Services	
To:	1-15000	Physical Plant Supplies & Expense	12,396
From:	1-14000	Student Administrative Services Supplies & Expense	
To:	1-10520	Institutional Research Supplies & Expense	700
From:	1-14001	Admissions Personal Services	
To:	1-14003	Financial Aid Capital Outlay	772
To:	1-14996	PSAT Search Supplies & Expense	28,772
To:	1-15000	Physical Plant Supplies & Expense	632
From:	1-14002	Registrar Personal Services	
To:	1-14002	Registrar Capital Outlay	6,238
To:	1-15000	Physical Plant Supplies & Expense	14,560
From:	1-14003	Financial Aid Repairs & Maintenance	
To:	1-14003	Financial Aid Capital Outlay	106
From:	1-14004	Counseling Personal Services	
To:	1-14006	Student Life Capital Outlay	20,719
To:	1-15000	Physical Plant Supplies & Expense	18,933
From:	1-14004	Counseling Repairs & Maintenance	
To:	1-14004	Counseling	

		Capital Outlay	271
To:	1-14006	Student Life	
		Capital Outlay	74
From:	1-14005	Career Services	
		Personal Services	
To:	1-14005	Career Services	
		Capital Outlay	9,329
To:	1-14006	Student Life	
		Capital Outlay	9,831
From:	1-14005	Career Services	
		Supplies & Expense	
To:	1-14006	Student Life	
		Capital Outlay	1,292
From:	1-14005	Career Services	
		Repairs & Maintenance	
To:	1-14006	Student Life	
		Capital Outlay	1,360
From:	1-14006	Student Life	
		Personal Services	
To:	1-14006	Student Life	
		Capital Outlay	1,219
From:	1-14007	Health Services	
		Personal Services	
To:	1-14006	Student Life	
		Capital Outlay	1,376
From:	1-14007	Health Services	
		Repairs & Maintenance	
To:	1-14006	Student Life	
		Capital Outlay	43
From:	1-14008	Multicultural Center	
		Personal Services	
To:	1-14006	Student Life	
		Capital Outlay	4,822
To:	1-14008	Multicultural Center	
		Capital Outlay	553
From:	1-14008	Multicultural Center	
		Repairs & Maintenance	
To:	1-14006	Student Life	
		Capital Outlay	120
From:	1-14100	Recreation & Building	
		Repairs & Maintenance	
To:	1-14100	Recreation & Building	
		Supplies & Expense	769
From:	1-14101	Intramurals	

To:	1-14101	Personal Services Intramurals Supplies & Expense	1,124
From:	1-14200	Athletic Administration Personal Services	
To:	1-14006	Student Life Capital Outlay	5,140
To:	1-14200	Athletic Administration Capital Outlay	2,311
From:	1-14200	Athletic Administration Repairs & Maintenance	
To:	1-14006	Student Life Capital Outlay	289
From:	1-15000	Physical Plant Personal Services	
To:	1-15000	Physical Plant Supplies & Expense	2,021
From:	1-15600	Distribution Services Personal Services	
To:	1-10751	USI Impact Study Supplies & Expense	60
To:	1-10760	Management & Marketing Personal Services	76
To:	1-14006	Student Life Capital Outlay	17,626
To:	1-14100	Recreation & Building Capital Outlay	2,988
To:	1-14101	Intramurals Supplies & Expense Capital Outlay	751 274
To:	1-15600	Distribution Services Supplies & Expense Capital Outlay	21,484 1,336
From:	1-15700	Security Capital Outlay	
To:	1-15700	Security Supplies & Expense	175
From:	1-16000	General Administrative Services Personal Services	
To:	1-16000	General Administrative Services Supplies & Expense Capital Outlay	72,402 8,659
From:	1-16000	General Administrative Services Supplies & Expense	
To:	1-15700	Security Supplies & Expense	719

From:	1-16100	Business Affairs	
		Personal Services	
To:	1-16000	General Administrative Services	
		Supplies & Expense	33,560
To:	1-16100	Business Affairs	
		Supplies & Expense	272
From:	1-16100	Business Affairs	
		Capital Outlay	
To:	1-15700	Security	
		Supplies & Expense	175
From:	1-16120	Business Office	
		Personal Services	
To:	1-16120	Business Office	
		Capital Outlay	1,812
From:	1-16220	Advancement	
		Personal Services	
To:	1-16220	Advancement	
		Capital Outlay	6,806
From:	1-16220	Advancement	
		Capital Outlay	
To:	1-16220	Advancement	
		Repairs & Maintenance	708
From:	1-16230	News & Information Services	
		Personal Services	
To:	1-16120	Business Office	
		Supplies & Expense	1,221
To:	1-16230	News & Information Services	
		Supplies & Expense	7,309
		Repairs & Maintenance	432
		Capital Outlay	564
From:	1-16300	Publications	
		Personal Services	
To:	1-16300	Publications	
		Repairs & Maintenance	5,700
		Capital Outlay	2,747
From:	1-16301	Duplicating Services	
		Personal Services	
To:	1-16120	Business Office	
		Supplies & Expense	12,260
To:	1-16300	Publications	
		Capital Outlay	4,494
To:	1-16301	Duplicating Services	
		Repairs & Maintenance	2,302
To:	1-16302	Copy Center Services	
		Capital Outlay	9,672
From:	1-16302	Copy Center Services	

To:	1-16302	Repairs & Maintenance Copy Center Services Capital Outlay	90
From:	1-16303	Graphic Design Personal Services	
To:	1-16120	Business Office Supplies & Expense	19,525
To:	1-16303	Graphic Design Repairs & Maintenance	910
To:	1-16304	Prepress & Bindery Repairs & Maintenance	4,159
From:	1-16400	Development Personal Services	
To:	1-16110	Human Resources Capital Outlay	10
To:	1-16120	Business Office Supplies & Expense Capital Outlay	3,925 5,897
To:	1-16200	President's Office Capital Outlay	288
To:	1-16220	Advancement Capital Outlay	1,694
To:	1-16240	Special Events & Scheduling Supplies & Expense	2,650
From:	1-16410	Alumni Affairs Repairs & Maintenance	
To:	1-16410	Alumni Affairs Supplies & Expense	150
From:	1-16500	Computer Center Supplies & Expense	
To:	1-16500	Computer Center Repairs & Maintenance Capital Outlay	3,519 239,352
From:	2-20000	Student Services Capital Outlay	
To:	2-20000	Student Services Supplies & Expense	3,000
From:	2-20000	Student Services Fee Capital Outlay	
To:	2-20000	Student Services Fee Supplies and Expense	5,459
From:	2-20100	Student Programs Capital Outlay	
To:	2-20100	Student Programs Repairs and Maintenance	500
From:	2-20130	Student Wellness Program	

To:	2-20130	Supplies and Expense Student Wellness Program Capital Outlay	493
From:	2-20200	Activities Programming Board Supplies and Expense	
To:	2-20200	Activities Programming Board Personal Services Repairs and Maintenance	30 367
From:	2-20300	Student Government Association Supplies and Expense	
To:	2-20300	Student Government Association Personal Services Repairs and Maintenance	652 222
From:	2-20300	Student Government Association Supplies and Expense	
To:	2-20300	Student Government Association Capital Outlay	2,400
From:	2-20500	Shield Capital Outlay	
To:	2-20500	Shield Repairs and Maintenance	167
From:	2-20600	Transitions Supplies and Expense	
To:	2-20600	Transitions Personal Services	34
From:	2-20700	Orientation Programs Personal Services	
To:	2-20700	Orientation Programs Supplies and Expense	13,537
From:	2-22000	Extended Services Revolving Fund Repairs and Maintenance	
To:	2-22000	Extended Services Revolving Fund Supplies and Expense	1,200
From:	2-22000	Extended Services Revolving Fund Capital Outlay	
To:	2-22000	Extended Services Revolving Fund Personal Services Supplies and Expense	1,738 1,192
From:	2-24000	Equipment Maintenance Revolving Fund Capital Outlay	
To:	2-24000	Equipment Maintenance Revolving Fund Supplies and Expense Repairs and Maintenance	249 2,420
From:	2-24200	Computer Maintenance Fund	

To:	2-24200	Personal Services Computer Maintenance Fund Supplies and Expense	14,758
From:	2-24200	Computer Maintenance Fund Repairs and Maintenance	
To:	2-24200	Computer Maintenance Fund Capital Outlay Supplies and Expense	6,082 10,355
From:	2-24300	Auto Self-Insurance Revolving Fund Repairs and Maintenance	
To:	2-24300	Auto Self-Insurance Revolving Fund Supplies and Expense	10,038
From:	2-24400	Telecom Revolving Fund Repairs and Maintenance	
To:	2-24400	Telecom Revolving Fund Personal Services Supplies and Expense	21,475 32,129
From:	2-24400	Telecom Revolving Fund Capital Outlay	
To:	2-24400	Telecom Revolving Fund Supplies and Expense	1,911
From:	2-25301	Faculty Research-Professor Peluchette Supplies and Expense	
To:	2-25301	Faculty Research-Professor Peluchette Personal Services	94
From:	2-25302	Faculty Research-Professor Shields Supplies and Expense	
To:	2-25302	Faculty Research-Professor Shields Personal Services	22
From:	2-25304	Faculty Research-Professor Quddus Personal Services	
To:	2-25304	Faculty Research-Professor Quddus Supplies and Expense	466
From:	2-25402	Faculty Research-Professor Newcomb Personal Services	
To:	2-25402	Faculty Research-Professor Newcomb Supplies and Expense	96
From:	2-25501	Faculty Research-Professors Roberts, White, Coudret Personal Services	
To:	2-25501	Faculty Research-Professors Roberts, White, Coudret Supplies and Expense	320
From:	2-25502	Faculty Research-Professor Koob Personal Services	
To:	2-25502	Faculty Research-Professor Koob	

		Supplies and Expense	520
From:	3-30100	Rental Property Capital Outlay	
To:	3-30100	Rental Property Repairs and Maintenance	1,000
From:	3-30200	University Center Supplies and Expense	
To:	3-30200	University Center Personal Services Repairs and Maintenance Capital Outlay	1,455 22,629 66,650
From:	3-30400	New Harmony Museum Shop Supplies and Expense	
To:	3-30420	New Harmony Museum Shop General Merchandise Supplies and Expense	3,566
From:	3-30500	Bookstore Personal Services	
To:	3-30500	Bookstore Supplies and Expense	3,210
From:	3-30500	Bookstore Repairs and Maintenance	
To:	3-30500	Bookstore Supplies and Expense	4,091
From:	3-30500	Bookstore Capital Outlay	
To:	3-30500	Bookstore Supplies and Expenses	8
From:	3-30600	Athletics Operations Capital Outlay	
To:	3-30600	Athletics Operations Personal Services Supplies and Expense	208 16,854
From:	3-30600	Athletics Operations Repairs and Maintenance	
To:	3-30600	Athletics Operations Supplies and Expense Supplies and Expense	1,223 3,961
From:	3-30609	Cross Country-Men Supplies and Expense	
To:	3-30609	Cross Country-Men Personal Services	11
From:	3-30613	Sports Medicine Personal Services	
To:	3-30613	Sports Medicine	



		Supplies and Expense	1,287
		Repairs and Maintenance	213
From:	3-30800	Children's Center Capital Outlay	
To:	3-30800	Children's Center Supplies and Expense	480
From:	3-30900	New Harmony Operations Personal Services	
To:	3-30900	New Harmony Operations Supplies and Expense	408
		Repairs and Maintenance	971
		Capital Outlay	5,177
From:	3-30910	New Harmony Gallery Supplies and Expense	
To:	3-30912	New Harmony Gallery Framing Supplies and Expense	3,699
From:	3-30920	New Harmony Tours Repairs and Maintenance	
To:	3-30920	New Harmony Tours Personal Services	455
From:	3-31040	Housing Capital Renovation Repairs and Maintenance	
To:	3-31040	Housing Capital Renovation Supplies and Expense	1
		Capital Outlay	51,897
From:	3-32006	Young Abe Lincoln 1996 Supplies and Expense	
To:	3-32006	Young Abe Lincoln 1996 Capital Outlay	587
From:	3-33800	O'Daniel Resident Assistants Supplies and Expense	
To:	3-33800	O'Daniel Resident Assistants Personal Services	400
From:	4-45090	Medical Education Supplies and Expense	
To:	4-45090	Medical Education Personal Services	5,847
		Repairs and Maintenance	11,210
		Capital Outlay	343
From:	4-46135	Reitz High School Project-Year 2/Eisenhower Funds Personal Services	
To:	4-46135	Reitz High School Project-Year 2/Eisenhower Funds Capital Outlay	3,393
From:	4-46135	Reitz High School Project-Year 2/Eisenhower Funds	

To:	4-46135	Supplies and Expense Reitz High School Project-Year 2/Eisenhower Funds Capital Outlay	2,508
From:	4-46136	Foundation for Community Health-Professor Kuric Supplies and Expense	
To:	4-46136	Foundation for Community Health-Professor Kuric Personal Services	4,653
From:	4-46137	Integrated Curriculum Project/Eisenhower Funds Supplies and Expense	
To:	4-46137	Integrated Curriculum Project/Eisenhower Funds Personal Services	257
From:	4-46402	Foundation for Community Health-Professor St. Clair Personal Services	
To:	4-46402	Foundation for Community Health-Professor St. Clair Supplies and Expense	1,374
From:	4-46502	Student/Faculty Research-Professor Kocakulah Supplies and Expense	
To:	4-46502	Student/Faculty Research-Professor Kocakulah Personal Services	44
From:	4-46603	Student/Faculty Research-Professor Price Personal Services	
To:	4-46603	Student/Faculty Research-Professor Price Supplies and Expense	120
From:	4-46812	Economic Geology of New Harmony Personal Services	
To:	4-46812	Economic Geology of New Harmony Supplies and Expenses	10

## MINUTES

### UNIVERSITY OF SOUTHERN INDIANA BOARD OF TRUSTEES

July 11, 1997

The University of Southern Indiana Board of Trustees met in annual and regular sessions on Friday, July 11, 1997, in the Conference Center of the New Harmony Inn in New Harmony, Indiana. Present were Trustees Bruce Baker, Louise Bruce, Charles Combs, Tina Kern, Thomas McKenna, Brian Pauley, Harolyn Torain, and James Will Sr. Also attending were President H. Ray Hoops; Vice Presidents John Byrd, Robert Reid, Richard Schmidt, and Sherrienne Standley; and Faculty Senate Chair Connie Cooper.

There being a quorum present, the meeting was called to order at 2:45 p.m.

#### SECTION I - GENERAL AND ACADEMIC MATTERS

##### A. ANNUAL MEETING OF THE BOARD

The annual meeting of the University of Southern Indiana Board of Trustees was held preceding the regular session. The minutes of the annual meeting are appended.

##### B. APPROVAL OF MINUTES OF MAY 9, 1997, MEETING

On a motion by Mr. McKenna, seconded by Mr. Will, the minutes of the May 9, 1997 meeting were approved.

##### C. ESTABLISHMENT OF NEXT MEETING DATE, TIME, LOCATION

The next regular meeting of the Board of Trustees was set for Thursday, September 4, 1997, at the University of Southern Indiana.

##### D. PRESIDENT'S REPORT

Dr. Hoops expressed appreciation to those who have hosted the Trustees at Thursday's premiere of *OKLAHOMA!* at the Lincoln Amphitheatre, and this evening's production of *A MIDSUMMER NIGHT'S DREAM* at the New Harmony Theatre.

Dr. Hoops commented on the preview of news on historic New Harmony at the New Harmony Commission meeting he attended Thursday afternoon. He then introduced Connie Weinzapfel, Director of Historic New Harmony for an update on the status of this outreach effort of the University.

In relation to the New Harmony activities, Dr. Hoops reported on the volunteer activities that President Emeritus David Rice has undertaken. First, in rural development, at the behest of Congressman Lee Hamilton, Dr. Rice has been providing leadership to initiate and organize the southern Indiana rural development project. With the assistance of the Lilly Endowment, the Indiana Department of Commerce, and other donors, the project has become an active partner with small communities to work to address their concerns and problems. Second, he has been working with the New Harmony Town Council by chairing a special committee to effect state and federal funding for a Wabash River Streambank Erosion Projection Project. With the recent budget enacted by the Indiana Legislature, funds are now available for state participation and federal funds are forthcoming. Related to this, he was asked by the federal highway administration to fill the position on the White County Bridge Commission, which operates the New Harmony Bridge over the Wabash. Finally, the Rapp Granary/David Dale Owen Laboratory has drawn on his fund-raising expertise as he has sought funding for a \$2.4 million restoration. With the help of donors making both gifts and pledges, only \$200,000 remains to be raised to qualify for a matching grant of \$1.0

million from the Lilly Endowment. Completion of this facility will double the conference space available in New Harmony. Dr. Rice expresses his appreciation to the trustees for the office space, part-time staff support and use of a university vehicle which make possible his ability to undertake these projects which benefit the University as well as the citizens of New Harmony and southern Indiana.

Dr. Hoops commented on the legislators and state officials responding so positively on the need for greater per-student appropriations, funds to complete and renovate space on campus, and to provide better facilities for the University's growing student body. Also, another development has been renewal of our reciprocity agreement with Kentucky for an eight-year period, and an expansion of our articulation agreements with Vincennes University.

Dr. Hoops welcomed Brian Pauley, newly appointed student Trustee and Connie Cooper, new Faculty Senate chair. They have recently spent a half day in a board orientation.

Dr. Hoops expressed his appreciation to Bruce Baker for his unprecedented five years of service as chairman of the board, and offered his appreciation to Harolyn Torain as the new board chair.

#### **E. APPROVAL OF RESOLUTION OF APPRECIATION TO BRUCE H. BAKER**

On a motion by Mr. Will, seconded by Mr. Combs, the following resolution was approved.

WHEREAS, Bruce H. Baker was appointed to the Board of Trustees in 1989, and

WHEREAS, in that capacity Mr. Baker has been an active partner in fully developing educational opportunities for young people, and

WHEREAS, in recognition of his leadership abilities, Mr. Baker was elected chairman of the Board of Trustees in 1992, and has served with distinction for the past five years, and

WHEREAS, during his tenure of leadership, the University has experienced extraordinary progress, including the selection and inauguration of President H. Ray Hoops, unparalleled growth in enrollment and acceptance of the University in wider state circles, the development of new academic and student life programs, and the initiation of the University's first capital campaign.

NOW, THEREFORE, BE IT RESOLVED, that at its thirteenth annual meeting, the Board of Trustees, assembled at New Harmony, Indiana, on July 11, 1997, commends Mr. Bruce H. Baker for his dedication to the full development of the University of Southern Indiana and the people it serves, and

FURTHER RESOLVED, that this resolution be adopted and spread upon its minutes for all time as a perpetual recognition of the deep gratitude owed by the University, its trustees, officers, students, and faculty, to Mr. Bruce H. Baker for his devoted service.

#### **F. REPORT OF THE LONG-RANGE PLANNING COMMITTEE**

The Long-Range Planning Committee met prior to the Board meeting with architects from Ratio Architects, Inc. to review the Pre-Design Phase plans for future student housing, the engagement of a firm to provide architectural services for construction of the next phase of student housing, and review of the revised mission statement. Recommendations for action on those topics are contained in agenda items G, H, and I.

#### **G. APPROVAL OF PRE-DESIGN PHASE PLANS FOR FUTURE STUDENT HOUSING**

The Long-Range Planning Committee recommended approval of the Pre-Design Phase plans for future student housing as presented by Ratio Architects, Inc.

On a motion by Mr. Baker, seconded by Mr. Will, approval of the Pre-Design Phase plans was approved.

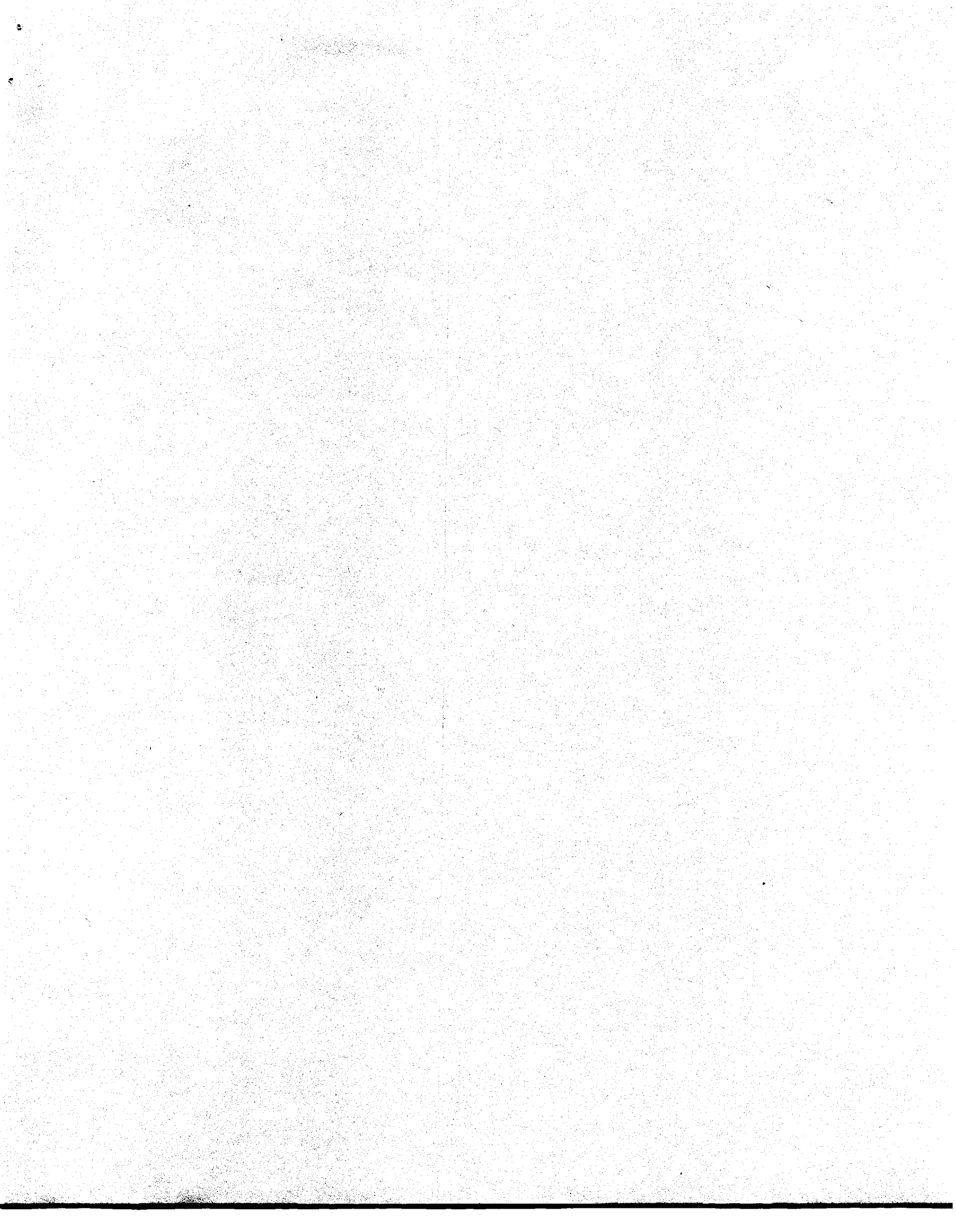
**H. APPROVAL OF THE SELECTION OF AN ARCHITECTURAL FIRM FOR THE NEXT PHASE OF STUDENT HOUSING**

The Long-Range Planning Committee recommended selection of Ratio Architects, Inc. for the design phase of the Student Housing Planning Project.

On a motion by Mr. Will, seconded by Mrs. Bruce, the recommendation of Ratio Architects, Inc. for the Design Phase of Student Housing was approved.

**I. APPROVAL OF THE MISSION STATEMENT**

The University's mission statement is reviewed and revised from time to time. The statement in Exhibit I-A has been reviewed and approved by the Long-Range Planning Committee, which recommends its approval by the Board of Trustees. On a motion by Mrs. Kem, seconded by Mrs. Bruce, the revised mission statement was approved.



**SECTION II - FINANCIAL MATTERS**

**A. APPROVAL OF THE DESIGN AND DEVELOPMENT PLANS AND COST ESTIMATES AND AUTHORITY TO PROCEED WITH THE BID PROCESS FOR THE CONSTRUCTION OF THE LIBERAL ARTS CENTER, INCLUDING INSTALLATION OF ADDITIONAL CHILLED WATER CAPACITY AT THE CENTRAL HEATING AND COOLING PLANT**

Architects from the firm of Hastings & Chivetta Architects, Inc. and representatives from The Skillman Corporation presented final construction documents and cost estimates for the Liberal Arts Center, including the installation of additional chilled water capacity at the central heating and cooling plant.

On a motion by Mr. Baker, seconded by Mrs. Kern, the final plans and authority to proceed with the bid process for the Liberal Arts Center and the installation of additional chilled water capacity was approved.

**B. APPROVAL OF RESOLUTION TO AUTHORIZE THE CONSTRUCTION COMMITTEE TO AWARD CONTRACTS FOR THE CONSTRUCTION OF THE LIBERAL ARTS CENTER AND THE INSTALLATION OF ADDITIONAL CHILLED WATER CAPACITY AT THE CENTRAL HEATING AND COOLING PLANT**

On a motion by Mr. Will, seconded by Mrs. Kern, the following resolution was approved.

WHEREAS, the Board of Trustees of the University of Southern Indiana wishes to enhance the completion of the construction of the Liberal Arts Center on a timely basis; and

WHEREAS, the Board of Trustees wishes to include the installation of additional chilled water capacity at the central heating and cooling plant in the Liberal Arts Center; and

WHEREAS, the construction bids will be received in August 1997 and the next scheduled meeting of the Board of Trustees is not until September 1997;

NOW, THEREFORE, BE IT RESOLVED THAT the Construction Committee is authorized to review construction bids and award a contract or reject any and all bids for the project; and

FURTHER RESOLVED that the Construction Committee is authorized to award the contract on behalf of the Board of Trustees; and

FURTHER RESOLVED that the Construction Committee will report its actions at the next scheduled meeting of the Board of Trustees.

**C. APPOINTMENT OF TRUSTEE TO THE CONSTRUCTION COMMITTEE**

It is recommended that the Chair appoint a trustee to the Liberal Arts Center Construction Committee to replace former trustee Nicole Cable, whose term ended June 30, 1997.

On a motion by Mrs. Bruce, seconded by Mr. Combs, the appointment of Finance Committee member Percy Clark Jr. to this committee was approved.

**D. APPROVAL OF INTERIM FINANCING FOR THE LIBERAL ARTS CENTER**

On a motion by Mr. Will, seconded by Mrs. Kern, the following resolution was approved.

WHEREAS, the Board of Trustees has received approval from the Indiana General Assembly for the construction and financing of a new classroom facility on its campus, more particularly described in Exhibit II-A hereto (the "Project"); and

WHEREAS, the Board of Trustees now desires to authorize further planning for the financing

and construction of the Project and to delegate certain powers to the Finance Committee and Treasurer; and

WHEREAS, the Board of Trustees anticipates that a need will exist for interim financing or financings to provide funds for the construction of the Project prior to the permanent financing therefor;

NOW, THEREFORE, BE IT RESOLVED by this Board as follows:

1. The Treasurer of this Board is hereby authorized to develop a plan of financing, including the selection of commercial or investment bankers, which may include the issuance of one or more notes under one or more loan agreements from time to time, in whole or in part up to the maximum authorized amount of the Project as described in Exhibit II-A hereto plus other costs incidental to the interim financing as authorized by Indiana Code 20-12-6.
2. The Treasurer is authorized to present the plan of financing described in paragraph 1 preceding (the "Plan") to the Finance Committee, from time to time, as appropriate, for approval.
3. The Finance Committee is hereby authorized to approve the Plan (as it may be modified or supplemented by such Committee) on behalf of this Board and to authorize the execution and delivery of such legal documents as may be necessary or appropriate, subject to the following conditions:
  - (a) The total aggregate amount of indebtedness occurred pursuant to this authorization (excluding refundings of financings authorized hereunder from time to time) shall not exceed the authorization described in Exhibit II-A hereto, plus incidental costs permitted by statute;
  - (b) The interest rates may be variable or fixed, and if fixed, may not exceed 8 percent per annum in true interest cost; and
  - (c) The final maturity of any interim financings incurred pursuant to the authority delegated in this Resolution may not exceed five years from the date of issuance.
4. The Chair, Vice Chairs, Treasurer, or Assistant Treasurer of this Board are hereby authorized to execute and deliver any notes, loan agreements, other contracts, agreements, certificates, or other documents as may be necessary or appropriate, subject to the further approvals required from the Finance Committee under paragraph 3 preceding.

#### **E. REPORT OF THE FINANCE COMMITTEE**

Mr. Combs reported that the Finance Committee had recommended approval of the Schedule of Fees for 1997-98 and also the interim financing proposals for the Liberal Arts Center for the Board's approval (Exhibit II-D).

The committee also was informed of a vendor change, from Citizens Bank to MBNA America Bank, for the University's purchasing credit card.

On a motion by Mr. Combs, seconded by Mr. Baker, the interim financing for the Liberal Arts Center with NBD Bank, N.A. was approved.

#### **F. APPROVAL OF AUTHORIZATION FOR THE CONSTRUCTION OF THE ART STUDIO**

On a motion by Mr. Will, seconded by Mr. Baker, the following resolution was approved.

WHEREAS, the estimated cost of the proposed Art Studio is significantly higher than the



University's budget projection; and

WHEREAS, the Board of Trustees wishes to proceed with the construction of the Art Studio in a timely manner; and

WHEREAS, alternative building and site plans are being developed (Exhibit II-B); and

WHEREAS, at its meeting on May 9, 1997 the Board of Trustees authorized the Construction Committee to approve architectural contracts and building plans, review construction bids, and award contracts or reject any or all construction bids for the Art Studio project; and

WHEREAS, the University has adequate plant reserve funds to fund the project if the cost does not exceed \$600,000;

NOW, THEREFORE, BE IT RESOLVED that the Construction Committee is authorized to accept and approve alternate plans and an alternate site as it deems appropriate and to report to the Board at its next meeting; and

FURTHER RESOLVED that, subject to the Construction Committee's approval of the project, President Hoops be authorized to request the Indiana Commission for Higher Education, the Indiana State Budget Committee, and the Governor of the State of Indiana to approve the Art Studio project.

#### **G. APPROVAL OF CONSTRUCTION BID FOR THE PHYSICAL ACTIVITIES CENTER EXPANSION PROJECT**

Construction bids for the PAC Expansion project have been received. The Vice President for Business Affairs reported and made a recommendation to accept the bid from Lichtenberger Construction based on review by University staff.

On a motion by Mr. Baker, seconded by Mr. McKenna, the proposed bid from Lichtenberger Construction was approved.

#### **H. REPORT ON CURRENT CONSTRUCTION PROJECTS**

A report was presented on the status of current construction projects.

#### **I. APPROVAL OF AUTHORIZATION FOR FINANCIAL AID AWARDS**

On a motion by Mr. Combs, seconded by Mr. Will, the following Authorization for Financial Aid Awards was approved.

Pursuant to Indiana Code 20-12-1-2, which provides for awarding financial aid to students from existing resources, the University of Southern Indiana Board of Trustees delegates to the President of the University of Southern Indiana the responsibility to approve financial aid recommendations for students within the 1997-98 budgetary capabilities.

#### **J. APPROVAL OF CURRENT AND PLANT FUND BUDGETS**

The recommended current operating budget for fiscal year 1997-98 will be presented. Increases over the previous year's budget are made possible by an increase in state appropriation, which includes an adjustment for prior enrollment increases, an increase in the student fee rate, and increases in several areas of other income. Budget increases are included for salaries and employee benefits, including health insurance.

The recommendation is for a balanced budget based upon estimates of revenue, state appropriations, and other available sources.

On a motion by Mrs. Kem, seconded by Mr. Will, the Current and Plant Fund Budgets in Exhibit II-C were approved.

**K. APPROVAL OF BUDGET APPROPRIATIONS, ADJUSTMENTS, AND TRANSFERS**

On a motion by Mr. Combs, seconded by Mr. Will, the following budget appropriations, adjustments, and transfers were approved.

**1. Additional Appropriations**

From: Unappropriated Designated Funds

To:	2-20110	Student Activities Supplies and Expense	300
To:	2-20120	Multicultural Center Supplies and Expense	800
To:	2-25112	Faculty Research-Professor Harison Supplies and Expense	75
To:	2-25117	Faculty Research-Professor Braysmith Supplies and Expense	3,440
To:	2-25118	Faculty Research-Professor Harison Supplies and Expense	529
To:	2-25119	Faculty Research-Professor Meliska Personal Services Supplies and Expense	1,320 94
To:	2-25120	Faculty Research-Professor Priest Personal Services Supplies and Expense	565 231
To:	2-25121	Faculty Research-Professor Rhoden Supplies and Expense	2,128
To:	2-25209	Faculty Research-Professor Freudenburg Supplies and Expense	752
To:	2-25210	Faculty Research-Professors Gunderson & Miller Supplies and Expense	3,695
To:	2-25211	Faculty Research-Professor Krahlung Supplies and Expense	2,606
To:	2-25212	Faculty Research-Professor Shaw Personal Services	2,112
To:	2-25311	Faculty Research-Professor Hall Personal Services Supplies and Expense	927 200

To:	2-25312	Faculty Research-Professors Kim & McGuire Personal Services Supplies and Expense	927 450
To:	2-25406	Faculty Research-Professors May & Hayashi Supplies and Expense	1,694
To:	2-25407	Faculty Research-Professors Meyer & Wasson Personal Services Supplies and Expense	200 1,438
From:	Unappropriated Restricted Funds		
To:	4-46245	Vision Athena - Corporation for Educational Communications Personal Services Supplies and Expense Repairs and Maintenance Capital Outlay	14,000 27,940 500 7,500
To:	4-46335	American Chemical Society - Project SEED 97 Personal Services	2,000
To:	4-46338	Faculty/Student Research-Professor Gunderson Personal Services	224
To:	4-46339	Millennium Petrochemicals Personal Services	3,200
To:	4-46342	Student/Faculty Research-Professor Shaw Supplies and Expense	970
To:	4-46816	Visualizing the Past - Indiana Humanities Council Personal Services Supplies and Expense	1,000 1,035
To:	4-46903	Mueller Photo Collection - Indiana Humanities Council Supplies and Expense	2,500

**2. Transfer and Appropriation of Funds**

From:	2-22100	Extended Services Revolving Fund	
To:	1-10910	Continuing Education Supplies and Expense	136

**L. APPROVAL OF SCHEDULE OF STUDENT FEES AND OTHER MANDATORY FEES FOR 1997-98**

The spending level approved for the state universities by the 1997 Indiana General Assembly includes an increase in student fees to supplement the state appropriation.

It is recommended that the per-semester credit-hour fee be increased by \$3.75 for Indiana resident undergraduate students, \$5.50 for Indiana resident graduate students, \$10.00 for non-resident undergraduate students, and \$12.50 for non-resident graduate students.

**Schedule of Fees**  
Effective Fall Semester 1997  
Per Semester Credit Hour

	<u>UNDERGRADUATE</u>		<u>GRADUATE</u>	
	Resident	Non-Resident	Resident	Non-Resident
Contingent	\$ 60.75	\$ 60.75	\$ 100.25	\$ 100.25
Instructional Facilities	16.25	16.25	16.25	16.25
Student Services	6.75	6.75	6.75	6.75
Non-Resident		121.50		124.50
<b>Total</b>	<b>\$ 83.75</b>	<b>\$205.25</b>	<b>\$123.25</b>	<b>\$247.75</b>

OTHER MANDATORY FEES

Campus Services Fee (8 or more credit hours per semester)	\$27.00
Campus Services Fee (more than 3 and fewer than 8 credit hours per semester)	20.50
Campus Services Fee (3 or fewer hours per semester)	0.00

On a motion by Mr. Will, seconded by Mr. Pauley, the proposed schedule of student fees and other mandatory fees for 1997-98 was approved.

**M. APPROVAL OF MISCELLANEOUS FEES**

**1. LABORATORY AND MISCELLANEOUS FEES**

	<u>Current Fee</u>	<u>Proposed Fee</u>	<u>Effective Fee</u>
Application Fee (Undergraduate)	\$ 25.00	\$ 25.00	07/01/97
Application Fee (Graduate)	25.00	25.00	07/01/97
Audit Fee (Plus Applicable Lab Fee)	30.00	30.00	09/02/97
Bad Check Penalty	15.00	15.00	07/01/97
Bowling Lab Fee	35.00	35.00	09/02/97
Change of Schedule	15.00	15.00	09/02/97
Computer Lab Fee	25.00	25.00	09/02/97
Departmental Exams	15.00	15.00	09/02/97
Distance Education Fee (Learning Center Fee, per credit hour)	15.00	15.00	09/02/97
Distance Education Supply Fee	100.00	100.00	09/02/97
Health Professions Insurance	15.00	15.00	07/01/97
Health Services Fee	0.00	37.00	09/02/97
ID Card Replacement Fee	5.00	5.00	09/02/97
Laboratory Fee	25.00	25.00	09/02/97
Late Registration Fee	25.00	25.00	09/02/97
Matriculation Fee (7 or more credit hours per semester)	60.00	62.00	07/01/97
Matriculation Fee (fewer than 7 credit hours per semester)	30.00	31.00	07/01/97
Nursing Test Fee	30.00	30.00	09/02/97
Payment Plan Fee	30.00	30.00	07/01/97
Payment Plan Late Fee	15.00	15.00	09/02/97
Parking Fee (8 or more credit hours per semester)	0.00	10.00	09/02/97

Parking Fee (more than 3 and fewer than 8 credit hours per semester)	0.00	7.00	09/02/97
Parking Fee (3 or fewer credit hours)	0.00	0.00	09/02/97
Parking Fee (per summer session)	0.00	3.00	09/02/97
Parking Fee (temporary)	0.00	3.00	09/02/97
Parking Fee Replacement Penalty	0.00	10.00	09/02/97
Physical Education Fee	15.00	15.00	09/02/97
Respiratory Therapy Advanced Life Support Fee	0.00	100.00	09/02/97
Studio Fee	25.00	25.00	09/02/97
Traffic Violation Fines			
Reckless Driving	35.00	35.00	07/01/97
Speeding	35.00	35.00	07/01/97
Parking Handicapped Zone	25.00	25.00	07/01/97
All Other Violations	5.00	5.00	07/01/97

## 2. ADMISSION PRICES FOR ATHLETIC EVENTS

It is recommended that the 1997-98 admission prices for athletic events be established as follows. A valid student identification card admits USI students free to regularly scheduled athletic events. Children two years of age and under not occupying a seat will be admitted free when accompanied by an adult. Children occupying a seat will be charged the student (non-USI) fee. Senior citizens 65 years of age or older will receive a \$1.00 discount on each single-admission ticket or pass. These fees will be effective July 1, 1997.

	<u>Current Fee</u>	<u>Proposed Fee</u>
<b>BASKETBALL, MEN AND WOMEN</b>		
SEASON TICKET		
Reserved Chairback	\$90.00	\$90.00
General Admission Bench, Adult	75.00	75.00
General Admission Bench, Student (non USI)	35.00	35.00
SINGLE GAME		
Reserved Chairback	8.00	8.00
General Admission Bench, Adult	7.00	7.00
General Admission Bench, Student (non USI)	4.00	4.00
<b>SOCCER</b>		
SINGLE GAME		
Family	8.00	8.00
Adult	4.00	4.00
Student (non USI)	2.00	2.00
<b>VOLLEYBALL</b>		
SINGLE GAME		
Adult	3.00	3.00
Student (non USI)	1.00	1.00

## 3. CHILDREN'S CENTER FEES

It is recommended that the 1997-98 Children's Center fees be set as follows.

	<u>Current Fee</u>	<u>Proposed Fee</u>
<u>Full-time Attendance</u> (Per-Day Fee) *		
One Child (USI)	\$14.50	\$15.00
One Child (off-campus parents)	18.00	18.00

Hourly Attendance (Per-Hour Fee) \*\*

One hour	2.75	2.75
One and one-half hours	3.50	3.75
Two hours	4.25	4.25
Two and one-half hours	4.75	4.75
Three hours	5.25	5.50
Three and one-half hours	6.25	6.25
Four hours	7.00	7.00
Four and one-half hours	7.75	7.75
Five hours	8.50	8.50
More than five hours = full time		

\* Snacks and lunches are included in the full-time fee.

\*\* Additional charges for snacks and lunches will be assessed all children attending part-time who are present at snack and/or lunch time.

**4. HOUSING CONDUCT PROGRAM PENALTIES**

The University Housing Office proposes the establishment of penalties for violation of its student resident conduct program. The plan provides a series of penalties assessed for violation of established rules of conduct for housing residents. Any resident who is sanctioned for established rule violations will be given a formal hearing with housing staff prior to the assessment of any penalty.

	Proposed
	<u>Penalties</u>
Level I	\$ 25.00
Level II	\$ 50.00
Level III	\$100.00

On a motion by Mr. Will, seconded by Mr. Pauley, the preceding laboratory and miscellaneous fees, admission prices to athletic events, Children's Center fees, and penalties for the Housing Conduct Program were approved.

**N. APPROVAL OF STUDENT HOUSING CONSTRUCTION PROJECT**

Planning for the next phase of Student Housing is progressing. However, because this phase of housing will utilize a location in an undeveloped area of the campus and will require completely new architectural plans, these units cannot be available before Fall 1999.

Enrollment and housing statistics for Fall 1997 indicate the need for additional space in student housing for Fall 1998. The University anticipates that approximately 500 students will be housed in off-campus housing in Fall 1997. Even with the additional space available in Golden Tower Apartments, the University will have a significant shortfall in the number of beds needed for Fall 1998.

In order to meet the projected housing need, the University recommends the construction of three additional housing units of the existing style in the present housing complex. The master plan for this complex includes site plans, utilities, and telephone services to accommodate the proposed additional units.

The student housing buildings will be of the same general design as the previously constructed buildings. The buildings will consist of sixteen two-bedroom apartments, each of which will house four students. The three buildings under consideration will house 192 students. The buildings will be constructed at a cost not to exceed \$3,200,000, which will include site development, architectural and engineering fees, construction costs, furnishings, and contingencies.

On a motion by Mr. Will, seconded by Mr. Baker, the following resolution was approved.

WHEREAS, the Board of Trustees wishes to proceed with the construction of three housing units in the present housing complex; and

WHEREAS, approvals may be required before the next regular meeting of the Board of Trustees;

NOW, THEREFORE, BE IT RESOLVED that the Chair authorize the current Construction Committee to approve building plans, review construction bids, and award a contract or reject any or all construction bids for the project and report to the Board on any action taken;

FURTHER RESOLVED that President Hoops be authorized to request the Indiana Commission for Higher Education, the Indiana State Budget Committee, and the Governor of the State of Indiana to approve the following actions:

- a. to enter into contracts to plan, construct, equip, finance, and otherwise provide for the construction of the student housing units;
- b. to use receipts from fees and earnings for the construction and financing of the project to the extent necessary; and
- c. to issue debt in the form of construction financing and bonds in an amount not to exceed \$3,200,000 to finance the project.

There being no further business, the meeting was adjourned at 4:55 p.m.

## **Mission Statement University of Southern Indiana**

American education assumes a link between the truth of an idea and the good it promotes for individuals and society. An educated person can be expected not only to be knowledgeable and more financially secure, but also a better citizen, among whose virtues are tolerance, judgment, and belief in freedom for self and others. These values develop in an atmosphere of open inquiry and pursuit of truth. Therefore, as the University of Southern Indiana seeks to support education, social and economic growth, and civic and cultural awareness, it will be devoted primarily to preparing students to live wisely.

The University of Southern Indiana is a broad-based institution offering instruction, research, and service. A liberal arts and science curriculum provides the foundation of knowledge for all programs and complements undergraduate programs leading to careers in business, engineering technology, government, health professions, education, and related fields. Selected master's degrees serve persons in professional and technical studies. As a public institution, the University of Southern Indiana counsels and assists business and industry, as well as social, educational, governmental, and health agencies to higher levels of efficiency and improved services.

The University was established in 1965 as a branch campus of Indiana State University with a regional mission, in response to a need for public higher education in southwestern Indiana. In 1985, the legislature created the University of Southern Indiana as a separate statewide public university. This change in structure and mission was best delineated by then-Governor Robert D. Orr in his charge to the Board of Trustees at its first meeting:

"You have a statutory mission that is laid out in the bill passed by the legislature, and it is going to take a lot of effort on the part of everyone to live up to those requirements as they have been spelled out by the Indiana General Assembly. This is now a statewide institution, and it is important that this point be emphasized. Heretofore, this has been a branch campus of Indiana State University, and it has been understood to be regional in nature. It was created to accomplish a regional mission...just as other branch campuses around the state. Now this is a state institution in the fullest sense of the word."

Community leaders have supported the University in providing a solid base for its present success and future growth. The University is expected to grow moderately in the years ahead as it seeks to positively affect postsecondary attainment levels in Indiana. To this end, the University emphasizes programs and services for traditional college-age students as well as for part-time, commuting, and older students. It has developed partnerships with high schools and has expanded opportunities for individuals in the workplace. The University is an institution which students choose for the strength of its academic programs and the quality of its student life.



A board of nine trustees, appointed by the Governor, governs the University. This board must include one alumnus of the University, one current student, and one resident of Vanderburgh County. Trustee terms are four years, except the student term, which is two years. The board has powers and duties common to other public postsecondary institutions in the State of Indiana.

The 1989 Indiana General Assembly authorized the Trustees of the University to construct, acquire, operate, and manage student housing facilities and to issue revenue obligations for this purpose. The Commission for Higher Education approved the transfer of ownership of student housing from a nonprofit foundation to the University of Southern Indiana in February 1994. The addition of housing facilities enables students to take full advantage of the educational, cultural, and recreational benefits that a residential campus offers.

Excellence in teaching will continue to be the most important criterion in faculty recruitment. At the same time, the ability to do research, to engage in continuous scholarly and creative work, and to provide service, primarily to the region and the state, will be important additional qualifications.

A major emphasis of the University of Southern Indiana is the delivery of credit programs. The primary curricular offerings include liberal arts, pre-professional, professional, technical, and occupational programs at associate, baccalaureate, and master's levels. The University provides comprehensive outreach and public service programs of short duration -- including workshops, conferences, seminars, and instructional courses. These programs will increase as the University continues to address economic, social, and cultural needs in Region 13 as well as in the state. The University's location in Evansville, the center of a predominantly rural region dotted with smaller population centers, gives it opportunities to increase educational access by both traditional means as well as through innovative instructional delivery systems, including active participation in the Indiana Higher Education Telecommunications System networks and other technology-based instruction.

The University welcomes appropriate partnerships for providing services to its constituency and cooperates with public and private universities, hospitals, and libraries to achieve this objective. The University participates with area business, industry, social and governmental agencies for research and development related to the problems and concerns of business development, labor-management relations, tourism and recreation, health-care delivery, gerontology, energy development, and environmental-quality analysis. Community groups often use campus facilities for the purpose of meetings, programs, services, and instruction.

The University works in cooperation with the Indiana Department of Natural Resources to manage historic properties and tourism programs in New Harmony, Indiana, a community with a rich intellectual and cultural inheritance. The community provides opportunities for research and laboratory learning experiences which benefit both the town and the University.

The University provides a comprehensive range of support services for students. These include academic skills development, child care, counseling, financial aid, placement, housing, health services, student activities, and both recreational and intercollegiate athletics. The University of

Southern Indiana participates in Division II intercollegiate athletics and is a member of the Great Lakes Valley Conference.

The University admits graduates of commissioned high schools in the state of Indiana who successfully complete college preparatory courses in English, mathematics, science, and social studies with at least a C average. Other students will be considered for admission to the University based on past academic performance and promise for future success.

The University is accredited at the baccalaureate and master's levels by the North Central Association of Colleges and Schools. Programs in education, engineering technology, social work, and the health professions are accredited by the appropriate professional organizations and state agencies.

## PROJECT DESCRIPTION

### NEW CONSTRUCTION - LIBERAL ARTS CENTER

**Budget Agency Number: G-0-93-1-01**

#### **DESCRIPTION OF THE PROJECT:**

The University of Southern Indiana proposed the construction of a general purpose classroom building (the Liberal Arts Center) in its 1995-97 Capital Improvement Budget Request. This project includes related site preparation for the building and expansion of the central campus chiller plant to accommodate the facility. Projections for the building include approximately thirty (30) general classrooms, twenty-two (22) specialized instructional facilities for individual disciplines, eighty (80) faculty offices, and administrative and academic/administrative support facilities.

The building will be located southwest of the University Center and east of Reflection Lake near the former location of the Children's Center. As part of the site preparation for the project, the Children's Center has been moved to the area near the Theatre Center and the Radio Center.

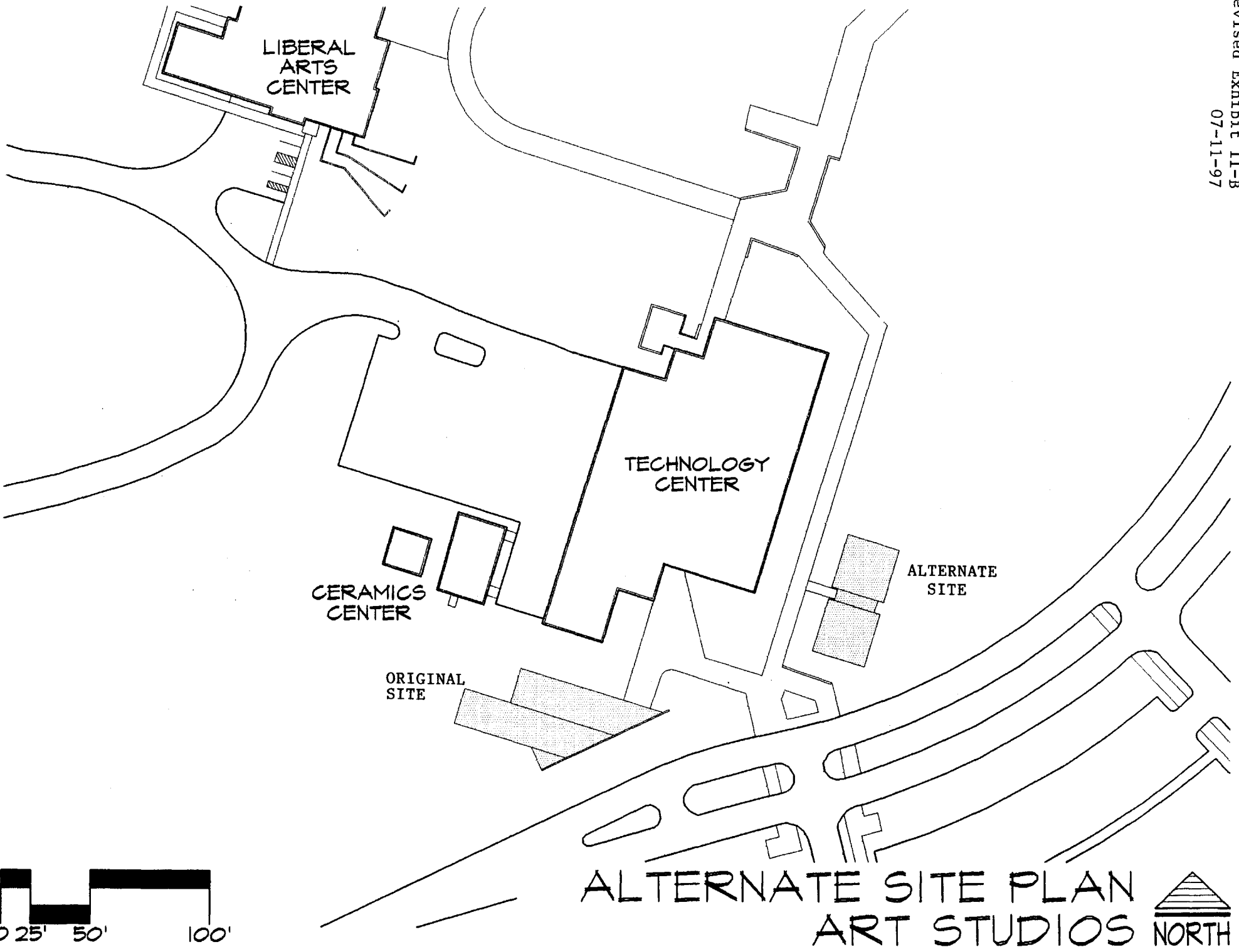
The primary function of this classroom building is to provide additional classrooms and faculty offices. The building also will provide specialized facilities and service areas for the School of Liberal Arts. The general purpose classrooms and lecture rooms will be available for scheduling by all academic schools.

**PROJECT SIZE:**           approximately 110,000 GSF

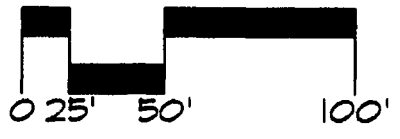
**ESTIMATED PROJECT COST:**       \$15,200,000

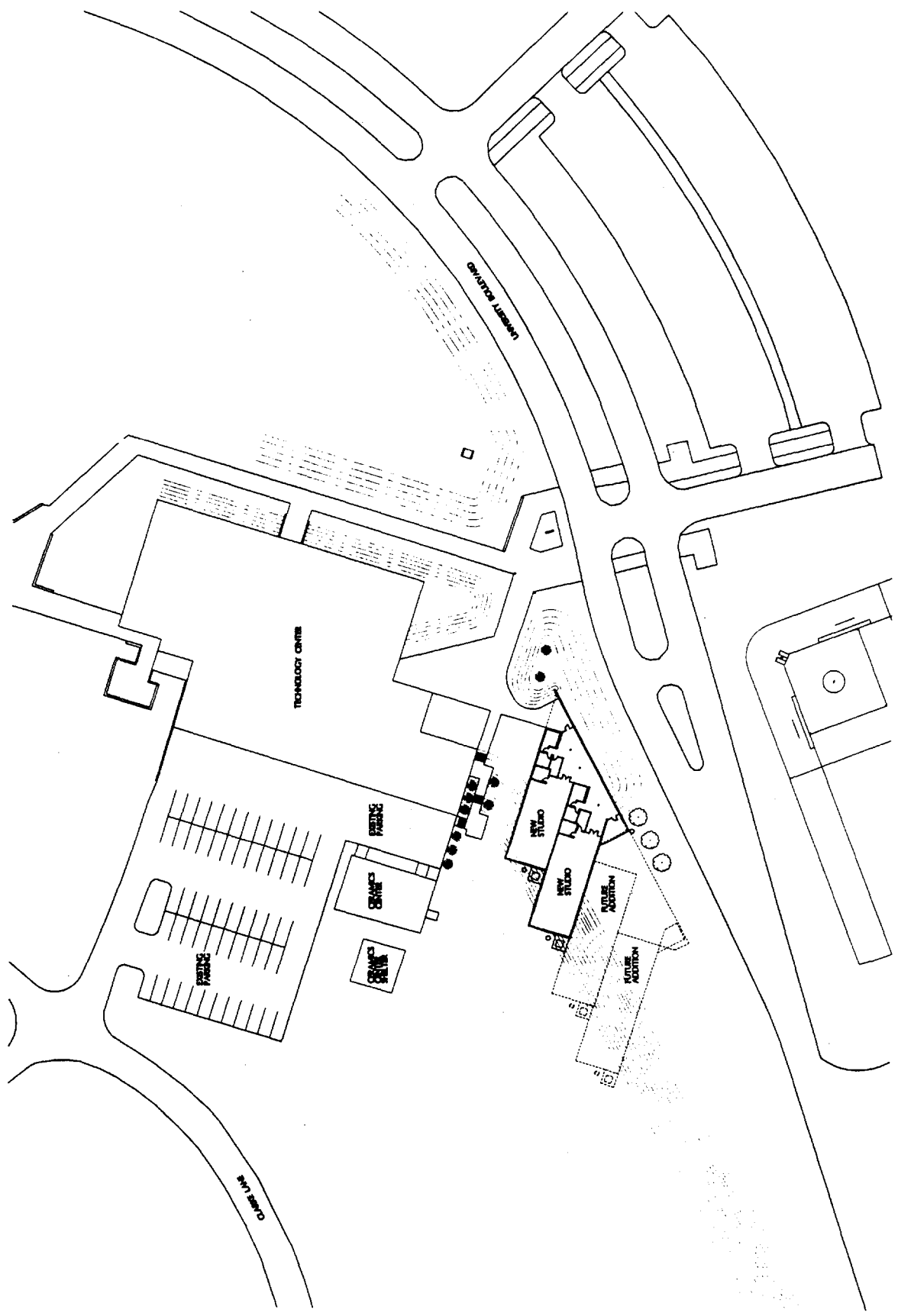
#### **ANTICIPATED CONSTRUCTION SCHEDULE:**

Bid Date	8/97
Start Construction	9/97
Occupancy	8/99

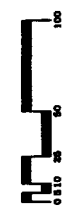


ALTERNATE SITE PLAN  
ART STUDIOS  NORTH





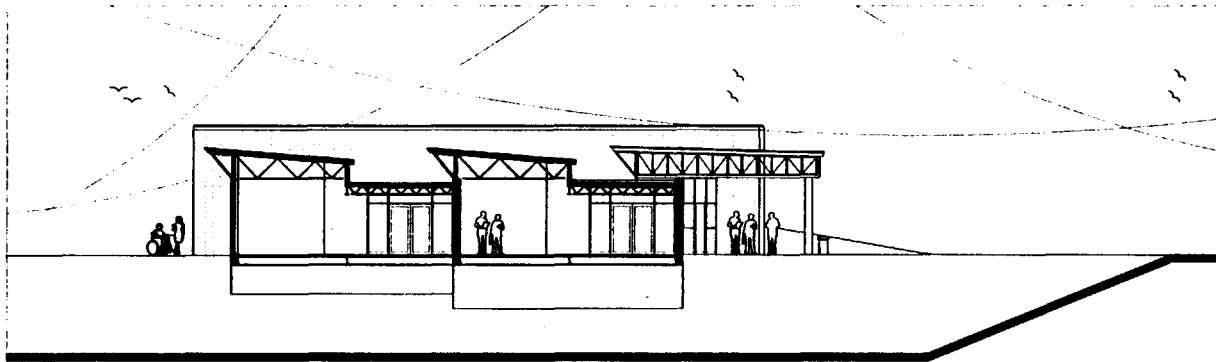
**VEAZEY  
PARROTT &  
SHOULDERS**



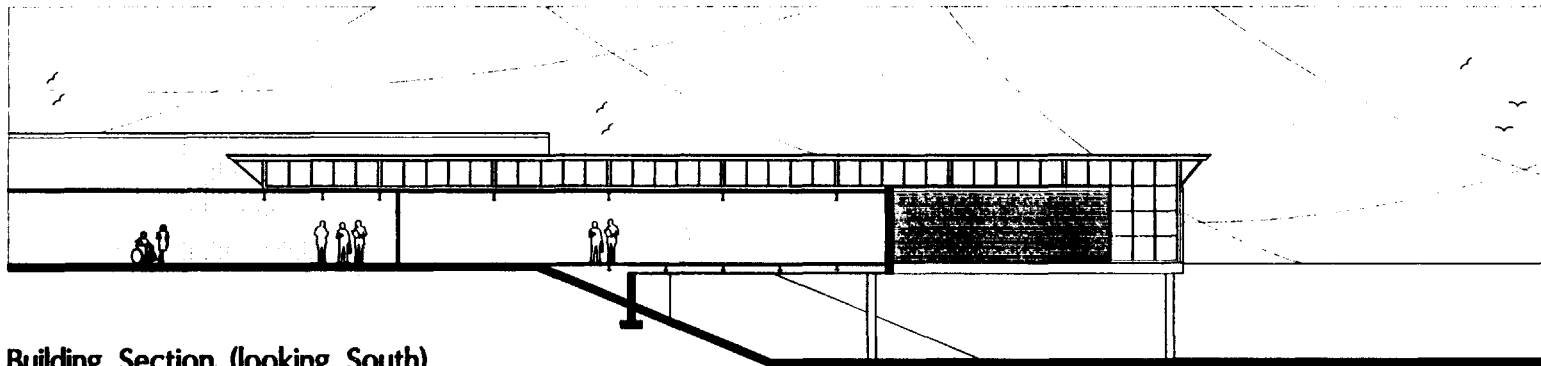
April 28, 1997

**Art Studios**  
University of Southern Indiana





Building Section (looking East)



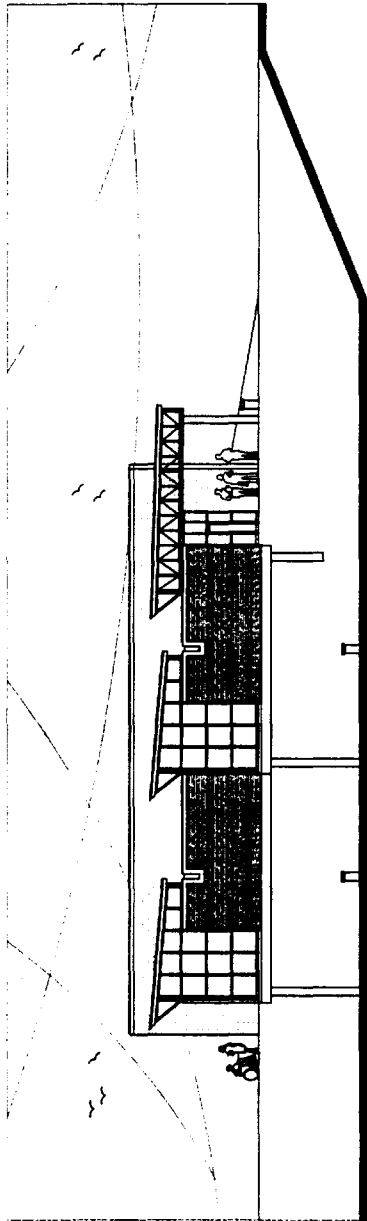
Building Section (looking South)

Art Studios  
University of Southern Indiana

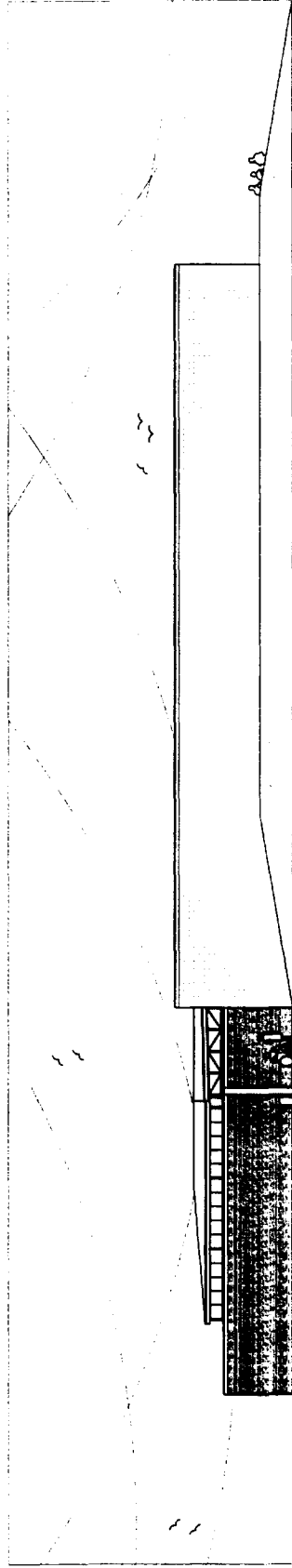
April 28, 1997



**VEAZEY  
PARROTT &  
SHOULDERS**



West Elevation



East Elevation

Art Studios

University of Southern Indiana

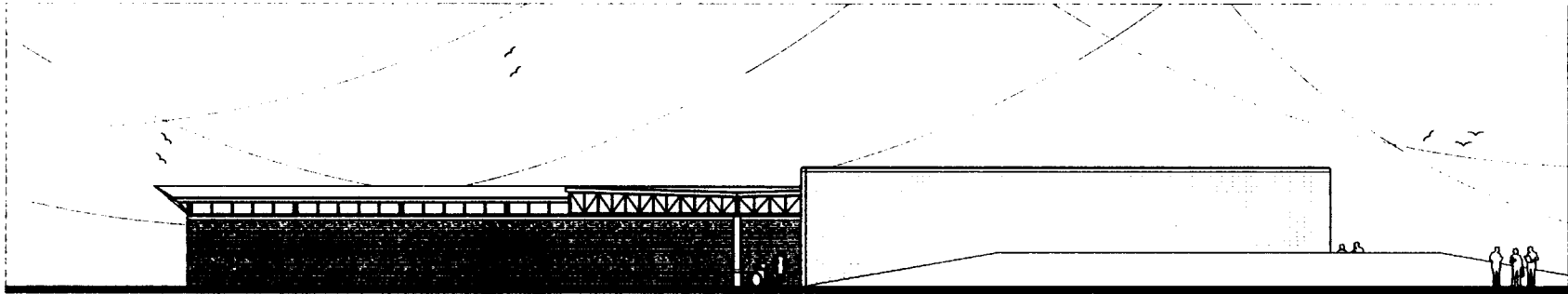
April 28, 1997



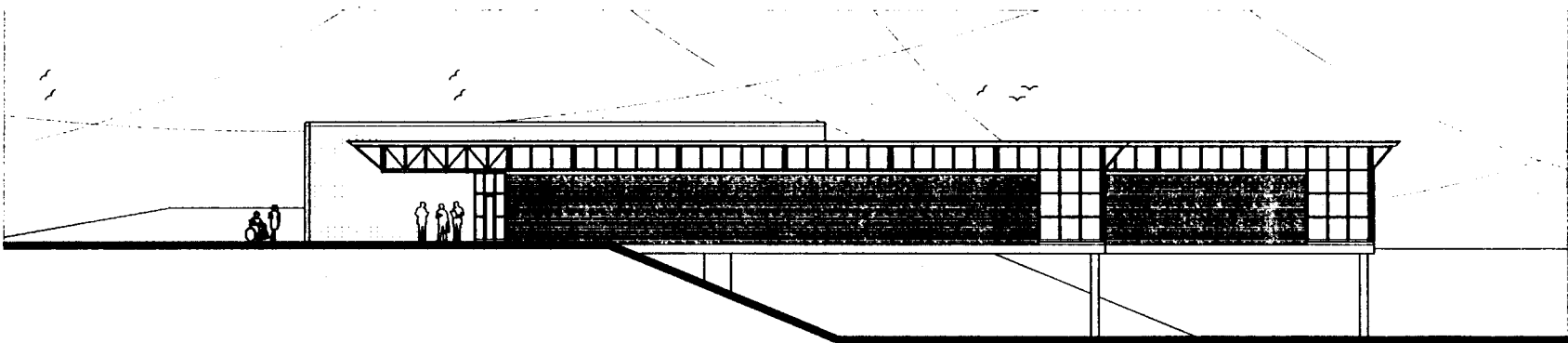
VEAZEY  
PARROTT &  
SHOULDERS







South Elevation



North Elevation

Art Studios  
University of Southern Indiana

April 28, 1997



VEAZEY  
PARROTT &  
SHOULDERS

## CURRENT OPERATING BUDGET SUMMARY

	<u>Actual 1995-96</u>	<u>Appropriation 1996-97</u>	<u>Appropriation Recommended 1997-98</u>
Fund Balance Allocated		474,795	471,461
<b>INCOME</b>			
State Appropriation	20,741,996	22,239,294	25,006,854
Student Fees	10,526,852	11,728,319	11,690,593
Other Income	<u>3,172,874</u>	<u>1,458,297</u>	<u>1,984,616</u>
<b>Total Income</b>	<b>34,441,722</b>	<b>35,425,910</b>	<b>38,682,063</b>
<b>TOTAL AVAILABLE</b>	<b>34,441,722</b>	<b>35,900,705</b>	<b>39,153,524</b>

### MAJOR EXPENSE CLASSIFICATION

Personal Services	24,003,989	27,170,306	29,487,296
Supplies and Expense	7,361,163	6,658,515	7,534,562
Repairs and Maintenance	1,121,096	1,151,166	1,218,700
Capital Outlay	<u>1,717,157</u>	<u>920,718</u>	<u>912,966</u>
<b>Total</b>	<b>34,203,405</b>	<b>35,900,705</b>	<b>39,153,524</b>

### FUNCTIONAL EXPENDITURE CLASSIFICATION

Instruction	18,193,382	20,208,413	21,713,410
Instruction Related	1,187,619	1,332,895	1,443,408
Student Services	2,715,995	2,946,114	3,298,877
Physical Plant	4,942,078	4,944,511	5,272,921
Administration and General	<u>7,164,331</u>	<u>6,468,772</u>	<u>7,424,908</u>
<b>Total</b>	<b>34,203,405</b>	<b>35,900,705</b>	<b>39,153,524</b>

	<u>Actual 1995-96</u>	<u>Appropriation 1996-97</u>	<u>Appropriation Recommended 1997-98</u>
<b>FUNCTION BY MAJOR EXPENSE CLASSIFICATION</b>			
<b>Instruction</b>			
Personal Services	15,856,739	17,923,448	19,303,942
Supplies and Expense	1,710,817	1,678,526	1,717,935
Repairs and Maintenance	207,840	319,386	366,517
Capital Outlay	417,986	287,053	325,016
<b>Total Instruction</b>	<b>18,193,382</b>	<b>20,208,413</b>	<b>21,713,410</b>
<b>Instruction Related</b>			
Personal Services	674,511	833,494	914,502
Supplies and Expense	109,206	110,378	132,233
Repairs and Maintenance	37,777	44,574	51,753
Capital Outlay	366,125	344,449	344,920
<b>Total Instruction Related</b>	<b>1,187,619</b>	<b>1,332,895</b>	<b>1,443,408</b>
<b>Student Services</b>			
Personal Services	2,224,971	2,473,009	2,768,180
Supplies and Expense	402,899	418,049	470,769
Repairs and Maintenance	26,535	31,852	37,077
Capital Outlay	61,590	23,204	22,851
<b>Total Student Services</b>	<b>2,715,995</b>	<b>2,946,114</b>	<b>3,298,877</b>
<b>Physical Plant</b>			
Personal Services	1,979,425	2,206,839	2,411,947
Supplies and Expense	1,994,520	2,037,274	2,214,794
Repairs and Maintenance	643,668	557,828	552,443
Capital Outlay	324,465	142,570	93,737
<b>Total Physical Plant</b>	<b>4,942,078</b>	<b>4,944,511</b>	<b>5,272,921</b>
<b>Administration and General</b>			
Personal Services	3,268,343	3,733,516	4,088,725
Supplies and Expense	3,143,721	2,414,288	2,998,831
Repairs and Maintenance	205,276	197,526	210,910
Capital Outlay	546,991	123,442	126,442
<b>Total Administration and General</b>	<b>7,164,331</b>	<b>6,468,772</b>	<b>7,424,908</b>
<b>Total Budget</b>	<b>34,203,405</b>	<b>35,900,705</b>	<b>39,153,524</b>